

Sharing > Learning > Improving

# WWT - Newsletter

## March 2024

**WORKPLACE TRANSPORT  
MANAGEMENT HEALTH & SAFETY**

**KEYNOTE SPEAKER - LISA RAMOS**

Walsall FC W51 4SA  
21 March 2024  
8.30 am to 12.30 pm

- Free breakfast rolls
- Sponsored by the HSE
- Presentations
- Exhibitors




Book your FREE place here  
<https://www.eventbrite.co.uk/e/workplace-transport-management-tickets-807563810077>

[www.bhsea.org.uk](http://www.bhsea.org.uk)













A WWT Construction Industry sponsored event supported by



## Contents

<i>Topic</i>	<i>Who by</i>
<b>Keynote</b> 	Lisa Ramos and David Garton
<b>MEWP Safety and IPAF</b> 	Richard Whiting - IPAF
<b>Connecting the Country</b> 	Neil Tyson – National Highways
<b>Prevention Engineering for Dangerous Proximity to Moving Vehicle</b> 	Andy Ravenscroft - Reactec
<b>Managing Transport at Work</b> 	Clark Hunter - Help GB and Steve Poxton - GMI
<b>NPORS - Working with Industry Partner</b> 	Geoff Jones - NPORS
<b>Reducing falls from MEWPs</b> 	Rob Lowe – Nationwide Platforms



## Keynote Speech

Lisa Ramos and David Garton

Lisa Ramos was hit by a forklift truck on the 24th March 2006. This is a date that is engraved on her memory forever. Not because it was the date of her only son's 13th birthday, but because it was the day she became an 'amputee'. Here, she tells the story of how one tragic moment in time has caused a lifetime of heartache and devastated generations of her family.



[The Hidden Cost | A-SAFE \(asafe.com\)](#)

[Amputee - Watch our Film | A-SAFE \(asafe.com\)](#)

[Link to presentation slides](#)



## MEWP Safety and IPAF

Richard Whiting - IPAF

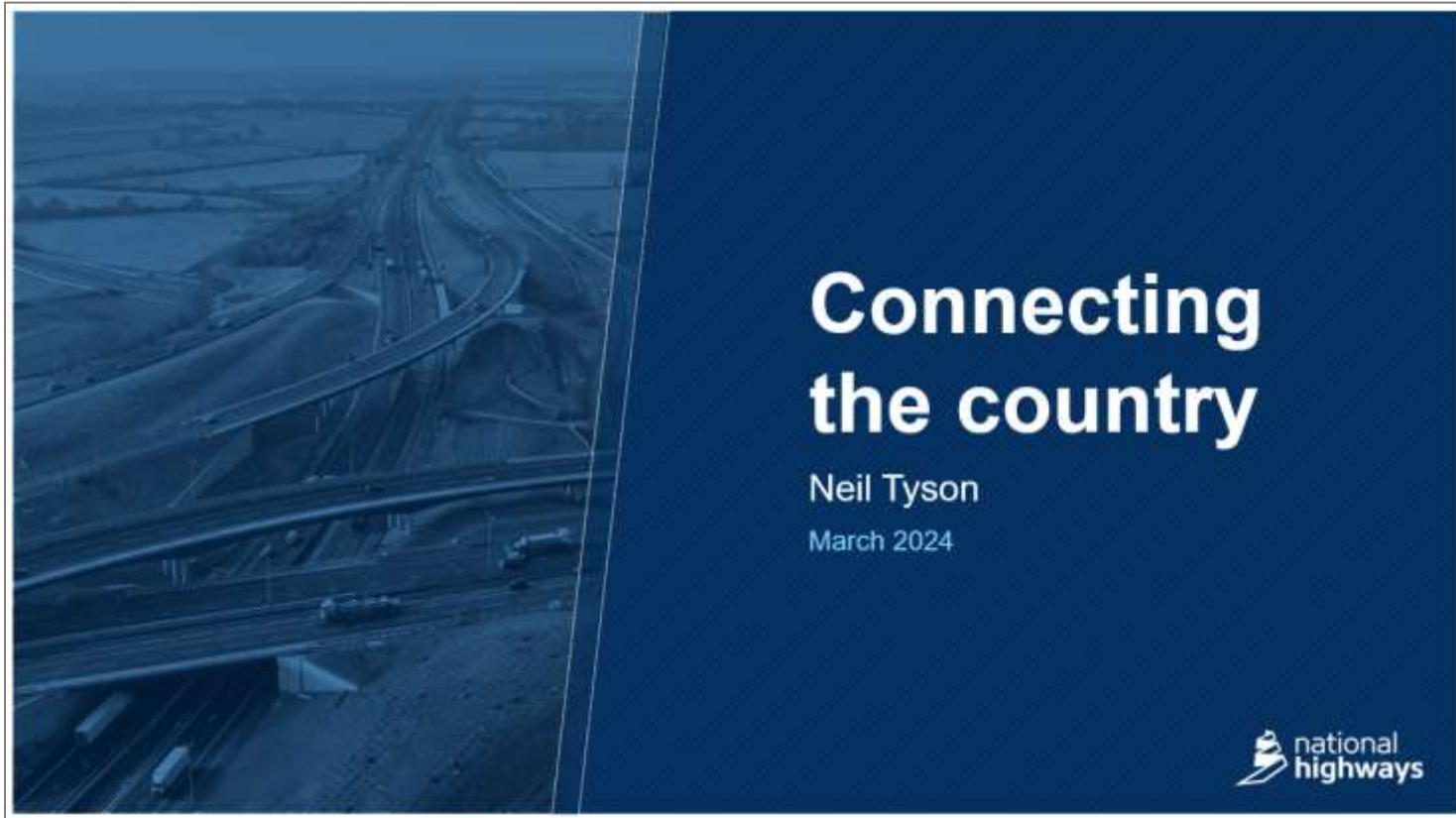


[Link to presentation slides](#)



# Connecting the Country

Neil Tyson – National Highways



[Link to presentation slides](#)



# Prevention Engineering for Dangerous Proximity to Moving Vehicle



Andy Ravenscroft - Reactec



[Link to presentation slides](#)



**Managing Transport at Work**  
Clark Hunter – HelpGB/ Steve Poxton - GMI



**WWT Workplace Transport Management**  
Managing Transport at Work –  
HELPGB.com and GMI  
21st March 2024

working well together

# NPORS – Working with Industry Partners

Geoff Jones - NPORS







## Reducing falls from MEWPs Rob Lowe – Nationwide Platforms



## Stay informed – Stay in touch BHSEA Membership – What’s in it for you?

### 94 Years of Supporting Health & Safety Practitioners



**A warm welcome  
awaits you at our  
monthly events**

“Very informative and enjoyable, plenty of info and topics to consider”

“Not been for a long time. Good presentations and good to be back”



Construction WWT Event

“I have really appreciated the professional and practical way that BHSEA has operated, I have been coming since 1995 and the support has been excellent”



BHSEA Awards

**Next**

**Next  
Monthly  
Event**

*Sharing > Learning > Improving*  
**AGM and Recruit, Retain Develop**  
**8 April 2024 13.30 – 15.30**

**Register to  
Attend**



*Sharing > Learning > Improving*

## **AGM**

**Leadership & Management,  
Coaching, Mindset & Resilience and  
Employability**

Andy Woodhall – One Degree Difference

**Walsall FC**

**8 April 2024 12.45 for 13.30 – 15.30**



**ODD**  
one degree difference

## **> Main Topics**

- **AGM**
- **Recruit, Retain and Develop – Andy Woodhall – One Degree Difference**
- **Members Corner - An award-winning entry – W A Management**

☎ 07881 290238  
✉ [secretary@bhsea.org.uk](mailto:secretary@bhsea.org.uk)  
🌐 [www.bhsea.org.uk](http://www.bhsea.org.uk)

Contains public sector information published by the Health and Safety Executive and licensed under the Open Government Licence. The information contained or referred to aims to guide, but is not a substitute for specific advice and expert opinion relevant to any particular circumstance.

Thank you




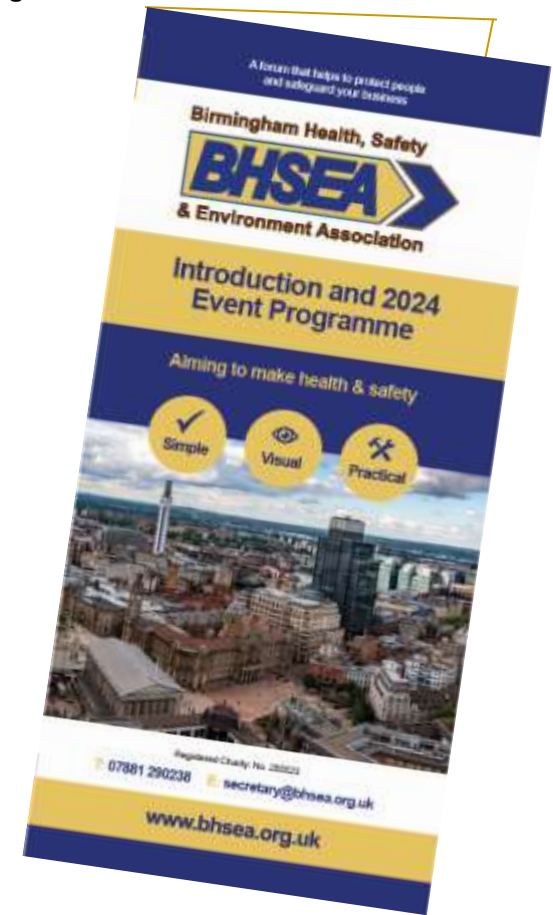
all our speakers and their organisations



and all of you for coming

# Finally – please:

- If you are not a BHSEA member then visit the BHSEA website and click on 'Join'. Membership fees start at £35 + vat for the year.
- Sign up to the BHSEA newsletter at [www.bhsea.org.uk](http://www.bhsea.org.uk) for information on all forthcoming events.
- Complete the Feedback Forms to receive Attendance Certificate
- All presentations will be posted on the BHSEA website  [www.bhsea.org.uk](http://www.bhsea.org.uk)



**Thankyou ➤ Goodbye ➤ Safe Journey**