



Sharing > Learning > Improving
Newsletter May 2020
includes webinar held on 11 May

Links to pages / sections via icons

➤ Introduction 

➤ Hazard Spotting 

➤ Main Topic 

➤ Information 

➤ Next Event(s) 

Information, Instruction and Training
Getting it right – making it stick



Ian Pemberton, Human Focus



Coronavirus latest – GOV UK, HSE & others 

21 May: Coronavirus – Back to Work 

8 June: Legal Update & Refresher 



07881 290238



secretary@bhsea.org.uk



www.bhsea.org.uk



Introduction to 11 May Webinar



Hello and a very warm welcome to the second Birmingham Health, Safety and Environment Association webinar.

I am particularly pleased to welcome those from other safety groups affiliated to Safety Groups UK and anyone else who has joined us today.

Although our monthly face-to-face events have been cancelled for the foreseeable future we are continuing to promote and support health and safety sharing, learning and improvement both for our members and the wider health and safety community.

For today we are indebted to our co-hosts, Human Focus, for both managing the technology and providing the speaker for in the form of Ian Pemberton.

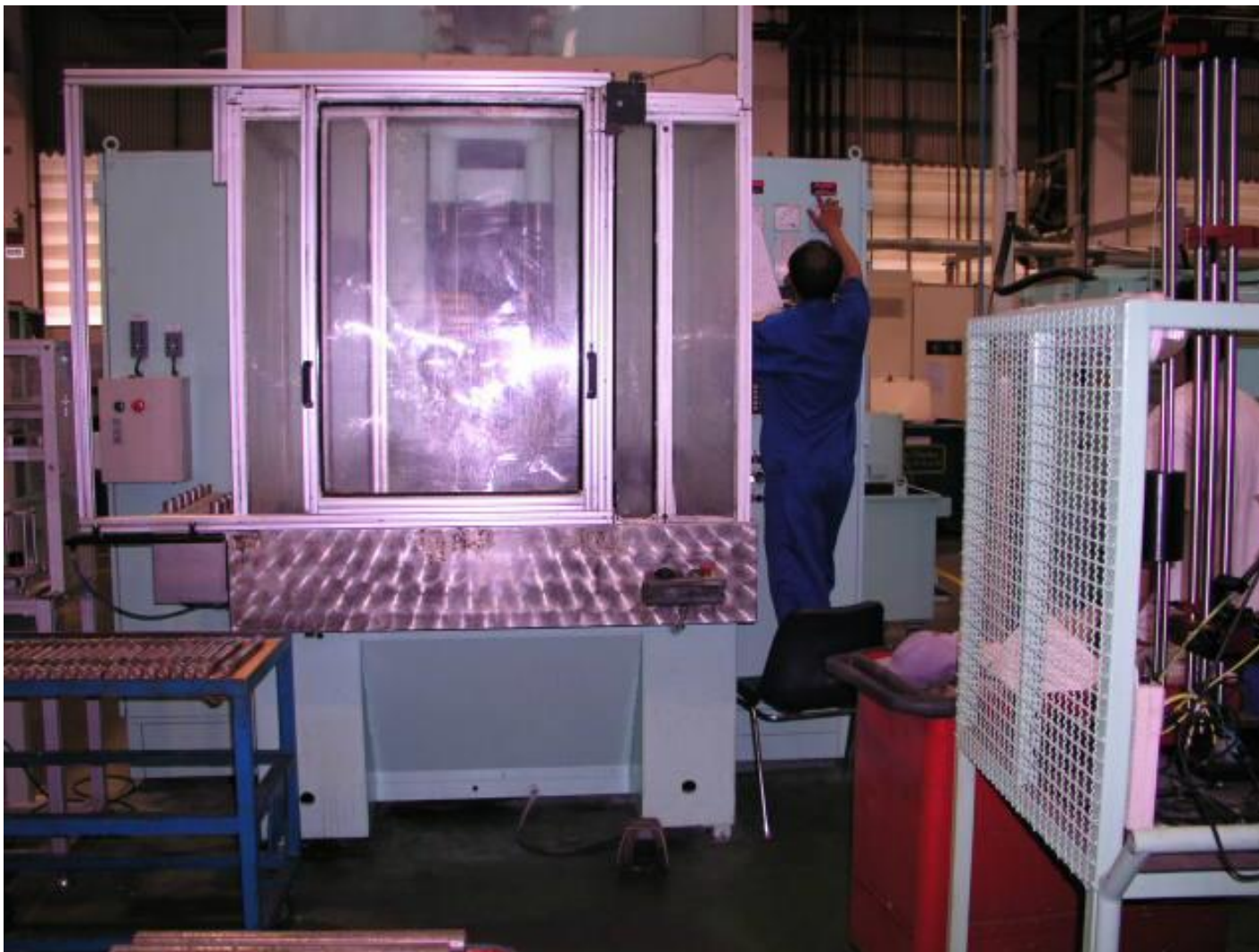
Ian brings vast experience and in my view something unique and different to health and safety training by applying a deep understanding of psychology and behavioural principles and practices.

Ian has modified his session for this afternoon to include an exploration of practical solutions and options for helping you to get your training online. This makes this presentation especially relevant to the current challenges you and your colleagues are no doubt facing.

Thank you for joining us today and we hope you stay safe and well.

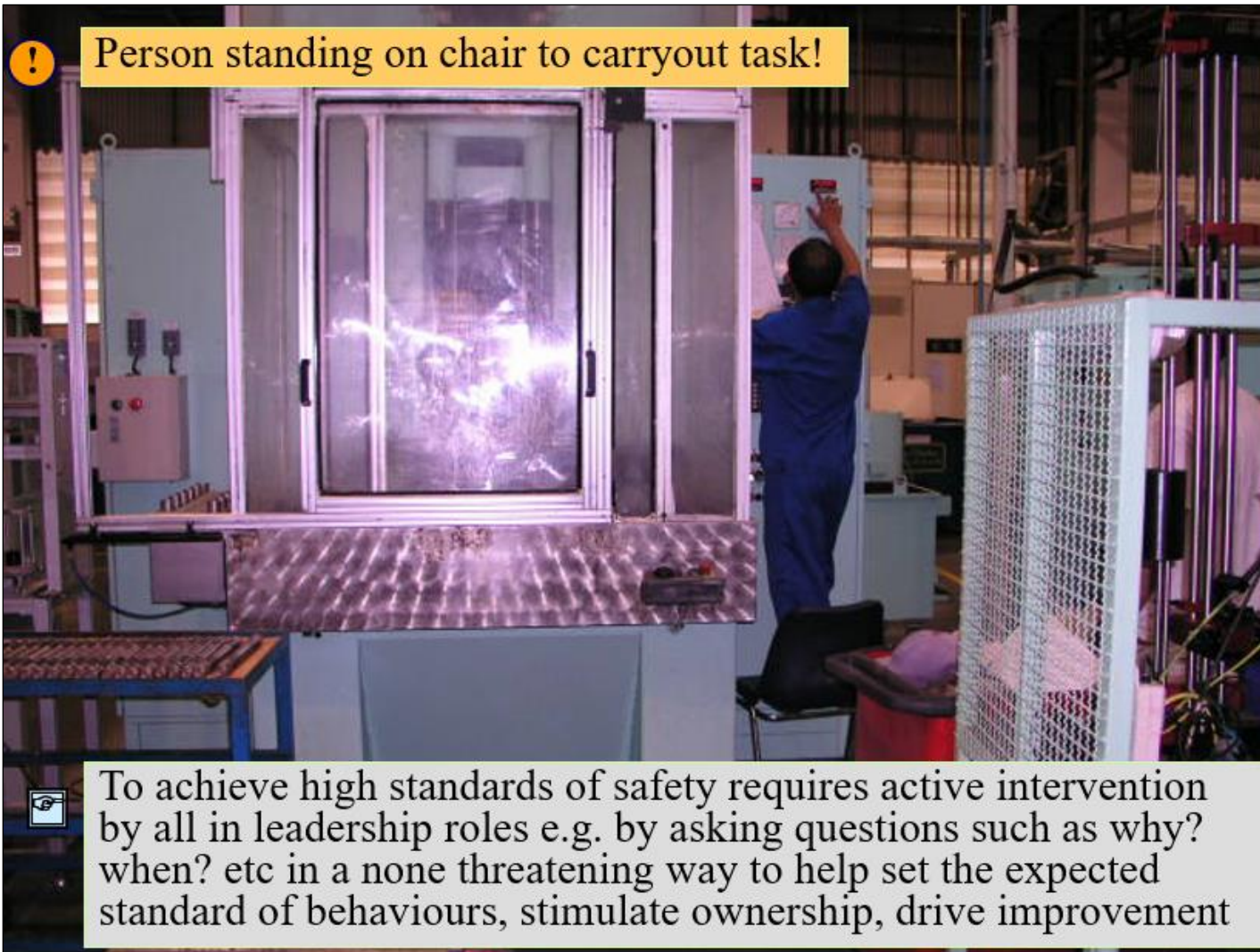


**What is good or not good?
Are there any questions you would ask?**





What is good or not good? Are there any questions you would ask?



To achieve high standards of safety requires active intervention by all in leadership roles e.g. by asking questions such as why? when? etc in a none threatening way to help set the expected standard of behaviours, stimulate ownership, drive improvement

What is good or not good? Are there any questions you would ask?

Multi skill chart of Fixed joint inner Cage line Update Aug-03 Page 1/1

Ability Score

- = 1~25 = Operate [Machine On/Off]
- = 26~50 = Set up [Quality adjust / Control]
- = 51~75 = Change over [Tool change]
- = 76~100 = Instruction [Teaching/Technic]

Machine / Operation	Operator name group "A"					Operator name group "B"				
										
Akoin Tube cutting	●	●	●	●	●	●	●	●	●	●
Garnal Forming	●	●	●	●	●	●	●	●	●	●
EMAG ID Turning	●	●	●	●	●	●	●	●	●	●
Garnal Windows punching	●	●	●	●	●	●	●	●	●	●
Meccanodora OD Grinding	●	●	●	●	●	●	●	●	●	●
Meccanodora ID Grinding	●	●	●	●	●	●	●	●	●	●
Meccanodora Windows Grinding	●	●	●	●	●	●	●	●	●	●
Dae chang Tumbling	●	●	●	●	●	●	●	●	●	●
Dae chang Drying	●	●	●	●	●	●	●	●	●	●
Final inspection & Packing	●	●	●	●	●	●	●	●	●	●



What is good or not good? Are there any questions you would ask?

Multi skill chart of Fixed joint inner Cage line Update Aug-03 Page 1/1

Ability Score

- = 1~25 = Operate [Machine On/Off]
- = 26~50 = Set up [Quality adjust / Control]
- = 51~75 = Change over [Tool change]
- = 76~100 = Instruction [Teaching/Technic]

Machine / Operation	Operator name group "A"					Operator name group "B"				
										
Akoin Tube cutting	●	●	●	●	●	●	●	●	●	●
Garnai Forming	●	●	●	●	●	●	●	●	●	●
EMAG ID Turning	●	●	●	●	●	●	●	●	●	●
Garnai Windows punching	●	●	●	●	●	●	●	●	●	●
Meccanodora OD Grinding	●	●	●	●	●	●	●	●	●	●
Meccanodora ID Grinding	●	●	●	●	●	●	●	●	●	●
Meccanodora Windows Grinding	●	●	●	●	●	●	●	●	●	●
Dae chang Tumbling	●	●	●	●	●	●	●	●	●	●
Dae chang Drying	●	●	●	●	●	●	●	●	●	●
Final inspection & Packing	●	●	●	●	●	●	●	●	●	●

Visual display of skills matrix

Evidence / details of what specific training points / skills covered for each level & confirmation that knowledge has been acquired & skills properly applied in practice



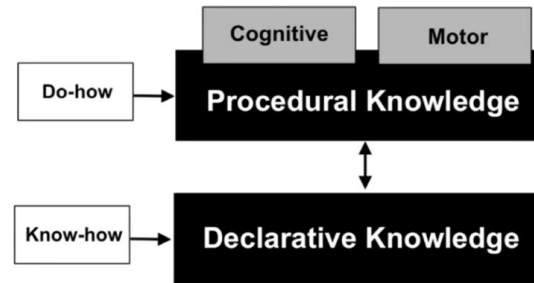
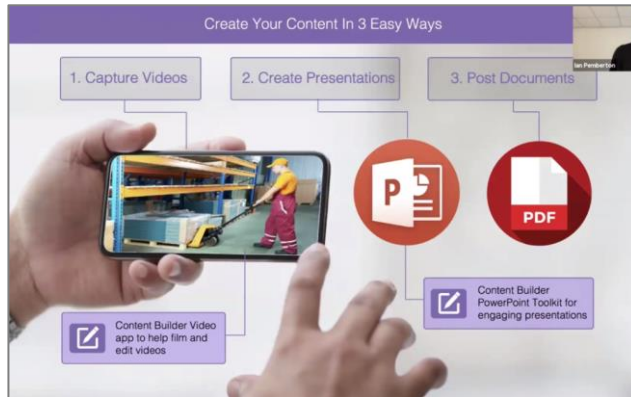
Information, Instruction and Training

Getting it right – making it stick

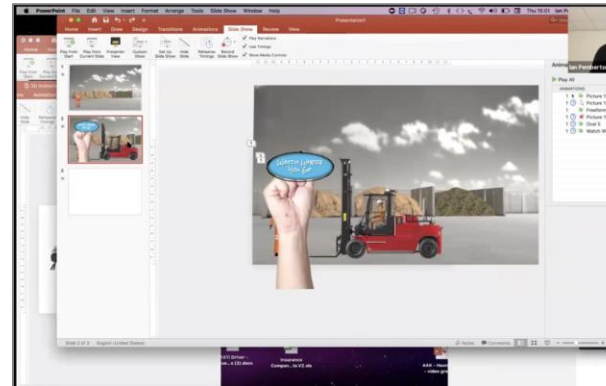
Ian Pemberton, Human Focus



**For webinar recording
click on box / picture**



Competency Triangle



FREE offers & references

Presentation slides

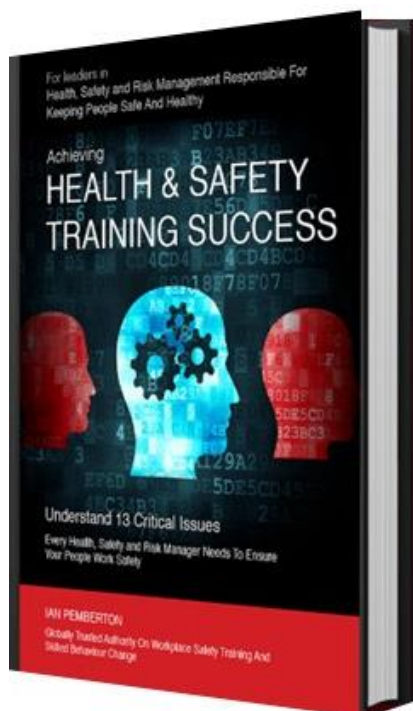


Information, Instruction and Training



FREE copy
of **Ian's book** (those who
joined the webinar)

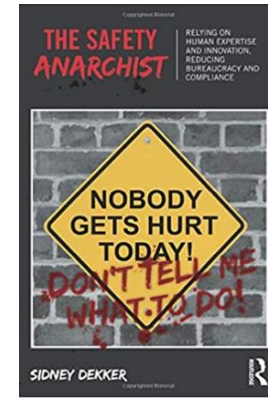
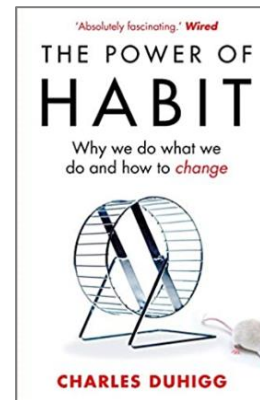
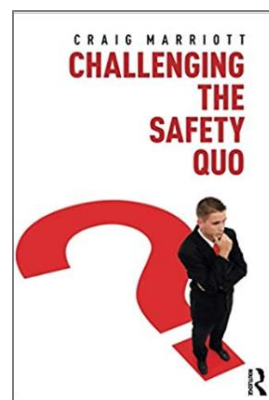
<https://funnel.humanfocus.co.uk/ahsts-book-free-book9782347980234>



Webinar Special Offer - FREE training and tools for
getting your training online (the first ten requests
received from those who joined the webinar)

Please confirm your expression of interest to Ian
Pemberton at: ian@humanfocus.co.uk

Other Books Referenced in the webinar





*Example from
BHSEA member*

Health and Safety Skills etc – Sample List

KEY CORE SKILLS

- › Risk profiling
- › Risk assessment
- › Accident / problem investigation
- › Training
- › Action planning and monitoring
- › Auditing
- › Behavioural approach
- › Law / legislative requirements
- › Facilitation
- › Programme and project management
- › Business Excellence
- › Lean tools and techniques

SPECIFIC HAZARD TOPICS

- › Air pollution
- › Construction
- › Contractors

SPECIFIC HAZARD TOPICS SKILLS continued

- › Electrical safety
- › Energy management
- › Ergonomics and manual handling
- › Fire loss prevention
- › Fork lift trucks and transport safety
- › Hazardous substances
- › High severity risks
- › Industrial hygiene
- › Lifting equipment
- › Machinery safety
- › Noise
- › Occupational health
- › Radiation
- › Soil and groundwater contamination
- › Waste management
- › Other:



Example

Health and Safety Skills etc – Sample List

KEY CORE SKILLS

- Risk profiling
- Risk assessment
- Accident / problem investigation
- Training
- Action planning and monitoring
- Auditing
- Behavioural approach
- Law / legislative requirements
- Facilitation
- Programme and project management
- Business Excellence
- Lean tools and techniques

SPECIFIC HAZARD TOPICS

- Air pollution
- Construction
- Contractors

SPECIFIC HAZARD TOPICS SKILLS

continued

- Electrical safety
- Energy management
- Ergonomics and manual handling
- Fire loss prevention
- Fork lift trucks and transport safety
- Hazardous substances
- High severity risks
- Industrial hygiene
- Lifting equipment
- Machinery safety
- Noise
- Occupational health
- Radiation
- Soil and groundwater contamination
- Waste management
- Other:



GOV.UK

 GOV.UK[Home](#)

Coronavirus (COVID-19)

<https://www.gov.uk/coronavirus>

Click on thumbnail to open

11 May Guidance
Our plan to rebuild: The UK Government's COVID-19 recovery strategy



10 May Speech
PM address to the nation on coronavirus



All coronavirus information on GOV.UK

- [Guidance](#)
- [News](#)


Stay up to date with GOV.UK
[Sign up to get emails when we change any coronavirus information on the GOV.UK website](#)

Other Coronavirus Information Sources

<https://www.hse.gov.uk/news/coronavirus.htm><https://osha.europa.eu/><https://www.who.int/>https://oshwiki.eu/wiki/Main_Page[More](#)



GOV.UK



[Home](#)


Coronavirus (COVID-19)

Stay alert

We can all help control the virus if we all stay alert. This means you must:

- stay at home as much as possible
- work from home if you can
- limit contact with other people
- keep your distance if you go out (2 metres apart where possible)
- wash your hands regularly

Self-isolate if you or anyone in your household has symptoms.


[Read more about what you can and cannot do](#)

<https://www.gov.uk/coronavirus>

Guidance and support

[Protect yourself and others from coronavirus](#)

[Testing for coronavirus](#)

[Health and wellbeing](#)

[Employment, financial support and money](#)

[Working safely](#)

[Businesses and self-employed people](#)

[School closures, education and childcare](#)

[Housing and accommodation](#)

[Driving and transport in the UK](#)

[International travel and immigration](#)

[Volunteering and offering help](#)

[Healthcare workers, carers and care settings](#)

[Support if someone dies](#)

Working safely during coronavirus (COVID-19)

From: Department for Business, Energy & Industrial Strategy
Published: 11 May 2020
Updated: 11 May 2020, see all updates

Next slide / page

More



GOV.UK

Working safely during coronavirus (COVID-19)

From: Department for Business, Energy & Industrial Strategy
Published: 11 May 2020
Updated: 11 May 2020, see all updates

Factories, Plants & Warehouses

[Download this guidance](#)

[Introduction](#)

[How to use this guidance](#)

[What do we mean by 'factories, plants and warehouses'?](#)

[1. Thinking about risk](#)

[2. Who should go to work](#)

[3. Social distancing at work](#)

[4. Managing your customers, visitors and contractors](#)

[5. Cleaning the workplace](#)

[6. Personal protective equipment \(PPE\) and face coverings](#)

[7. Workforce management](#)

[8. Inbound and outbound goods](#)

[Where to obtain further guidance](#)

[Appendix](#)

Definitions: Common areas; Clinically extremely vulnerable people; Clinically vulnerable people.

Objective: That all employers carry out a COVID-19 risk assessment.

- [1.1 Managing risk](#)
- [1.2 Sharing your risk assessment](#)

- [2.1 Protecting people who are at higher risk](#)
- [2.2 People who need to self-isolate](#)
- [2.3 People who have protected characteristics](#)

- [3.1 Coming to work and leaving work](#)
- [3.2 Moving around buildings and worksites](#)
- [3.3 Workplaces and workstations](#)
- [3.4 Meetings](#)
- [3.5 Common areas](#)
- [3.6 Accidents, security and other incidents](#)

- [4.1 Manage contacts](#)
- [4.2 Providing and explaining available guidance](#)

- [5.1 Before reopening](#)
- [5.2 Keeping the workplace clean](#)
- [5.3 Hygiene: handwashing, sanitation facilities and toilets](#)
- [5.4 Changing rooms and showers](#)
- [5.5 Handling goods, merchandise and other materials, and onsite vehicles](#)

- [6.1 Face coverings](#)
 - [COVID-19: personal protective equipment \(PPE\) plan](#)
 - [COVID-19: cleaning in non-healthcare settings](#)

- [7.1 Shift patterns and working groups](#)
- [7.2 Work-related travel](#)
- [7.3 Communications and training](#)

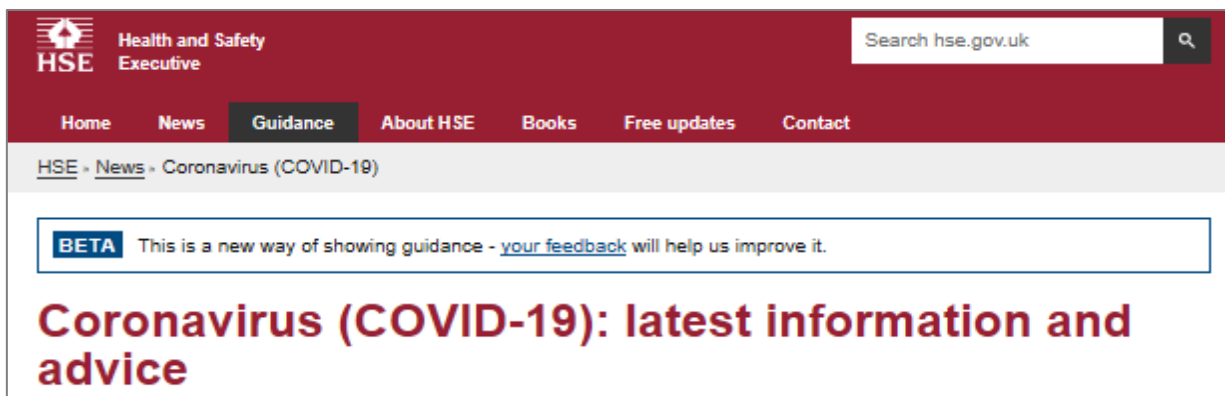
Objective: To maintain social-distancing and avoid surface transmission when goods enter and leave the site, especially in high volume situations, for example, distribution centres, despatch areas.

- [Coronavirus \(COVID-19\): what you need to do](#)
- [Coronavirus \(COVID-19\): guidance for employers and businesses](#)

More



HSE



You can get **up-to-date information** about [Coronavirus \(COVID-19\) and what you need to do](#) on GOV.UK.

- [Working safely during the coronavirus outbreak](#)

Guides to help you run your business while keeping people safe

- [Contact HSE](#)

Help and advice on how to protect people from coronavirus (COVID-19) in your workplace

- [RIDDOR reporting of COVID-19](#)

When, what and how you should report under RIDDOR

- [Hand sanitiser - manufacture and supply](#)

Work to ensure manufacturers and supply chains can meet the increased demand

- [Face masks - face fit test](#)

A face fit test ensures that respiratory protective equipment (RPE) protects you

- [Drivers - access to welfare facilities and hours rules](#)

Drivers must have access to welfare facilities and the changes to drivers' hours rules

- [Work equipment - examinations and testing](#)

Ensuring your work plant and equipment remain safe to use

- [Protect home workers](#)

Employers have the same responsibilities for home workers as for any other workers

- [First aid cover and qualifications during the outbreak](#)

What you can do to comply with the law if first aid cover is reduced due to coronavirus

More

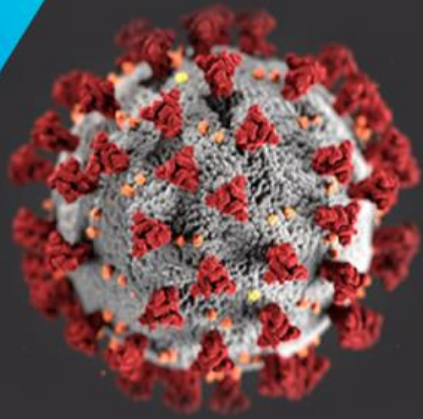


3M's response to the current COVID-19 pandemic

Click anywhere on box to find our more

3M response to Covid-19

Learn about 3M's educational content and resources



3M's response to the current COVID-19 pandemic

As part of 3M's response to the current COVID-19 pandemic 3M Personal Safety Division has launched a website consolidating a range of useful educational content for customers at this time. The site contains links to a range of helpful resources including Respiratory Protective Equipment (RPE) fitting posters/videos, care and maintenance guidance and other useful information. This content is updated regularly to help provide you with the information to protect your customers, employees, and yourself.

More



Face coverings / Respirators / Surgical Masks

What - Why – Who - How



OUR PLAN TO REBUILD:
The UK Government's
COVID-19 recovery strategy

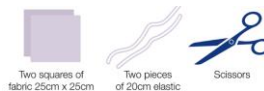
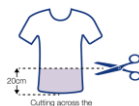
May 2020
CP 239

Extract

Face-coverings

As more people return to work, there will be more movement outside people's immediate household. This increased mobility means the Government is now advising that people should aim to wear a face-covering in enclosed spaces where social distancing is not always possible and they come into contact with others that they do not normally meet, for example on public transport or in some shops. Homemade cloth face-coverings can help reduce the risk of transmission in some circumstances. Face-coverings are not intended to help the wearer, but to protect against inadvertent transmission of the disease to others if you have it asymptotically. A face covering is not the same as a facemask such as the surgical masks or respirators used as part of personal protective equipment by healthcare and other workers. These supplies must continue to be reserved for those who need it. It is important to use face coverings properly and wash your hands before putting them on and taking them off.

Guidance
How to wear and make a cloth face covering
Published 11 May 2020



<https://www.gov.uk/government/publication/s/how-to-wear-and-make-a-cloth-face-covering/how-to-wear-and-make-a-cloth-face-covering>



3M Science.
Applied to Life.™

Technical Bulletin
March, 2020
Global V3
EMEA Version V1

Respirators and Surgical Masks: A Comparison

<https://multimedia.3m.com/mws/media/18195750/respirators-and-surgical-masks-a-comparison-emea.pdf>



Extract

Respirators

Designed to help protect the wearer from exposure to airborne particles

Designed to seal tightly to the wearer's face

Different classes offer different level of protection

Some respirators are certified as both respirators and surgical masks

Require face fit testing and wearer to be clean shaven

Respirators are Personal Protective Equipment (PPE)

Surgical masks

Designed to help protect the sterile environment from wearer generated particles

Not necessarily designed to seal tightly to the face and so air leakage around the edges is likely

Some types offer fluid resistance to liquid splash

Surgical masks are not Personal Protective Equipment as defined in the PPE regulations



FREE live Webinar
21 May

Coronavirus – Back to Work

Click anywhere on box to open / register

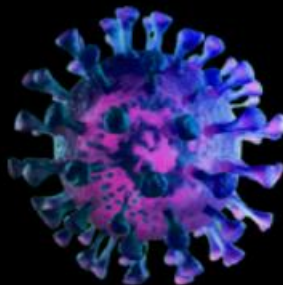
EXITING THE LOCKDOWN & GETTING BACK TO WORK:

Practical solutions to implement coronavirus guidelines

FREE

Live Webinar

May 21st, 2PM, BST



Practical guidance and best practice for implementing the government guidelines on coronavirus infection controls

This free live webinar will explore:

- A risk-based approach to implementing risk controls that are both effective and practical
- Best practice case studies
- Ideas for making your exit from the lockdown effective whilst minimising disruption

More



Next BHSEA Events - Everyone welcome

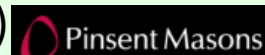
We would be delighted to welcome you as a guest

Monday 8 June

Legal Update and Refresher - *Webinar*

Louise Mansfield, Pinsent Masons

1.45 - 2.45pm (approx)



NOTE:

Reminder and joining instructions will be sent out well before.

Newsletter, presentation slides etc will follow on the BHSEA website.

14 Sep: Machinery and Work Equipment Safety
- Anthony Bowmer, EEF


12 Oct: Construction Matters

09 Nov: Environment Update and Refresher

14 Dec: Members Challenges and Achievements – What, why and how

Details to follow in due course

- Stay safe
- Stay well
- Stay alert
- Stay with the guidance
- Stay in touch

 07881 290238



secretary@bhsea.org.uk



www.bhsea.org.uk